

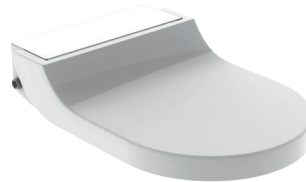
Geberit AquaClean Tuma enhancement seat



↑ White Alpine
Art no. 146.278.11.1



↑ Brushed Stainless Steel
Art No. 146.278.FW.1



↑ White Glass
Art No. 146.278.SI.1



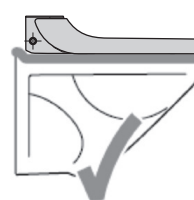
↑ Black Glass
Art No. 146.278.SJ.1

WC ceramic requirements for Geberit AquaClean Tuma enhancement seat

- Minimum length of ceramic from wall or cistern: 53cm
- Seat hole spacing: 13,5 - 17,5cm
- A template is available from Geberit to test whether the Tuma IS COMPATIBLE WITH YOUR CERAMIC. Contact 0800 032 9629 or email aquaclean.uk@geberit.com



Round shape in the front part of the ceramic bowl



↑ Even surface across the top of the bowl. A raised section of up to 15mm at the rear edge is acceptable



Technical dimensions

